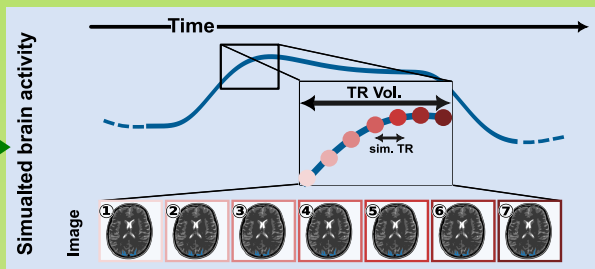


SNAKE: Reproducible fMRI simulator validates new acquisitions & reconstructions from Neuro-activation to raw-data

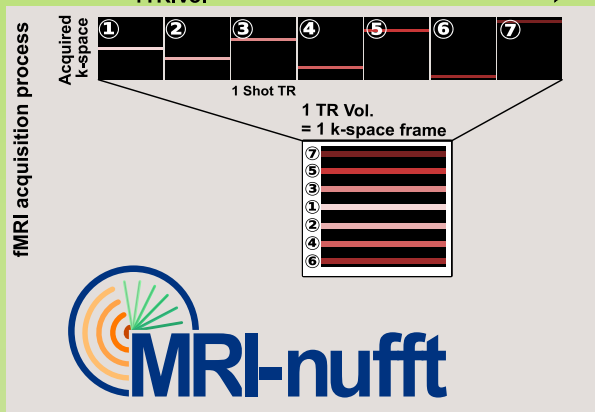


Simulation config

- shape/FOV
TR/TE/FA
- sampling_pattern
tissues T1/T2*/...
coils sensitivities
- Event Design + HRF
Noise



- No Bloch Equations
- Fixed State for each shot
- Fourier Model for acquisition
- Scalability
- Modular & Flexible



Simulation.mrd

raw-data
Reference Timeseries
& Ground-Truths

